

## Roller brake tester for passenger cars and light commercial vehicles

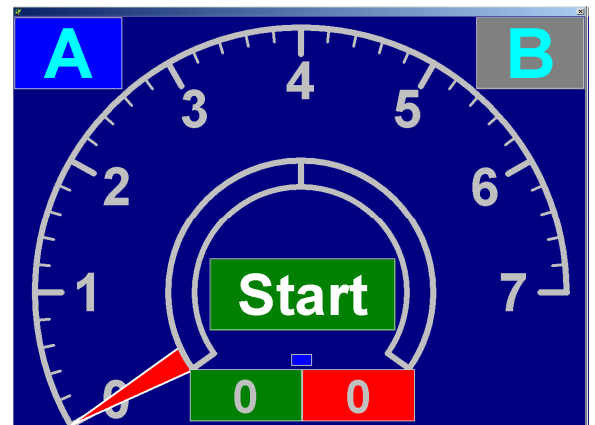
Suitable for diagnostic brake measurement and for periodical technical inspection of vehicles with maximum 3,6 t axle weight. The divided mechanical unit can be sunk level with the ground. It is mounted with special wheel slip sensors and load cells to measure brake force. Upgradeable with axle load measurement (**ERBT-3.6/M2-W**). The equipment and the measurements are controlled by Energoline<sup>®</sup> test lane software.



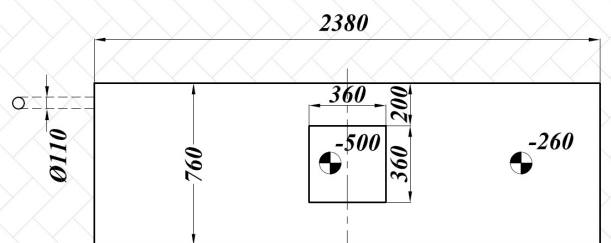
- Brake measurement of M1, (M2), N1, O1, O2 vehicle categories
- Can be installed before or on inspection pit
- Elevated rear rollers to measure higher brake forces
- Measuring electronics based on CAN-system
- Brake measurement versus time or pedal force
- Drive-out aid with fixed rollers
- 4WD brake measurement (option)
- Built-in axle load measurement to determine brake efficiency (option)
- Energy sparing construction

### Requirements for installation

- Preparation of concrete bed / groundwork
- Preparation of electrical installation (main supply)
- Preparation of tracks for electronic cables



Energoline<sup>®</sup> brake measurement screen



Installation scheme  
(no replacement for installation drawing)

**Standard equipment**

- Left and right mechanical unit with roller covering plates
- Electronic power box
- Emergency button
- RS232 computer interface

**Accessories**

- Energoline® test lane software
- Computer configuration

**Optional accessories**

- Computer desk
- Pedal force meter
- Wireless remote controller
- Wireless remote controller with pedal force meter
- Free running roller set for 4WD brake measurement
- Soft-start of the electric motors by vector inverter
- One-phase operation

**Technical data**

Maximum axle load for measurement: 3,6 t  
 Minimum track width: 850 mm  
 Maximum track width: 2160 mm

Roller diameter: 160 mm  
 Roller width: 655 mm  
 Rear roller elevation: 20 mm  
 Roller surface: epoxi based corundum  
 Roller friction (dry / wet): 0,8 / 0,6

Measurement speed: 3,6 km/h  
 Measurement range: 0 – 7,5 kN  
 Measurement accuracy: ±1 %

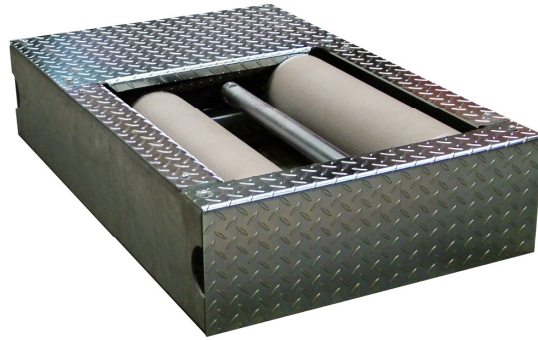
Installed dimensions (W x L x D): 2380 x 760 x 260 mm  
 Corrosion protection: galvanised

Drive power: 2 x 3,8 kW  
 Supply: 3 x 400 V  
 Fuse: 3 x 25 A

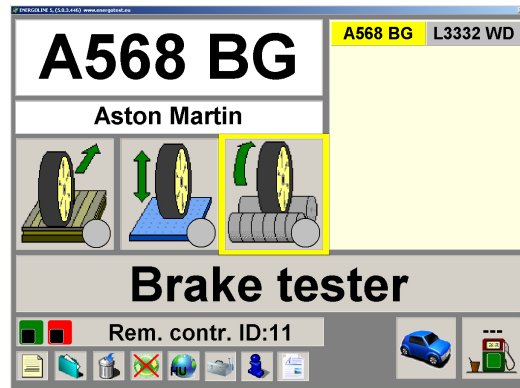
Axle load measurement (ERBT-3.6/M2-W)  
 Axle load measurement range: 0 – 3,6t  
 Axle load measurement accuracy: ±1 %

Made in Hungary

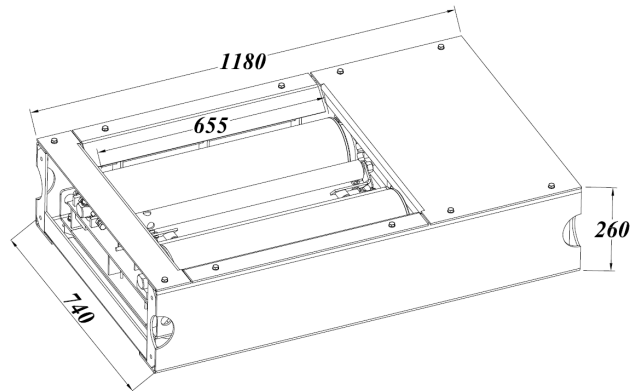
Your partner:



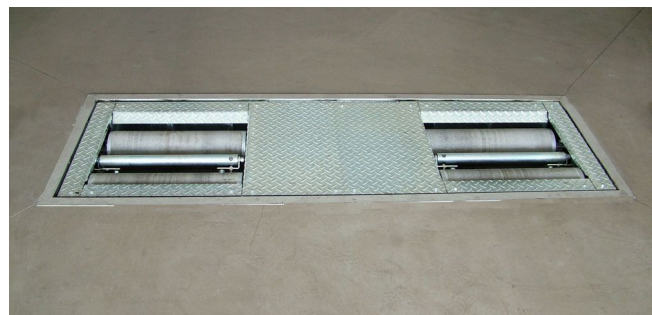
ERBT-3.6/M2 mechanical unit



Energoline® main screen



Dimension of mechanical unit



Installed ERBT-3.6/M2

Due to constant product improvement Energotest reserves the right to make changes without prior notice. Images may contain optional extras.

[www.energotest.eu](http://www.energotest.eu)

✉ H - 2330 Dunaharaszti, Gomba u. 4.  
 Hungary  
 ☎ +36-24 / 50-11-50 Fax +36-24 / 50-11-70

Technical information: [tms@energotest.hu](mailto:tms@energotest.hu)  
 Sales: [export@energotest.hu](mailto:export@energotest.hu)  
 Company reg. no.: 13-09-075580

