



in-line PRO

Innovation within reach

The edding in-line PRO is a state-of-the-art printing system with intuitive operation via a 10.2" touch panel and a compact print head for narrow installations.

As with every edding compact printer, reliability is paramount to ensure efficient production. Combined with the ease of use, there is no need for specially trained technicians and resources can be allocated more wisely.

The system is supplied as a complete package with all necessary accessories.

Thanks to its extensive interfaces, the system can be fully integrated into existing plants and IT systems - for Industry 4.0 in action.

Due to edding's ink expertise, printing is possible on almost all materials.

The system was developed together with edding and technology partner Elried.



Choice of different ink types and colours for almost every material



IronLock+ cartridge lock for precise hold of the cartridge even with strong vibrations



Input via 10.2" touch screen, wireless keyboard, mobile devices or PC



Various interfaces for connection to ERP systems



intuitive installation & commissioning within minutes



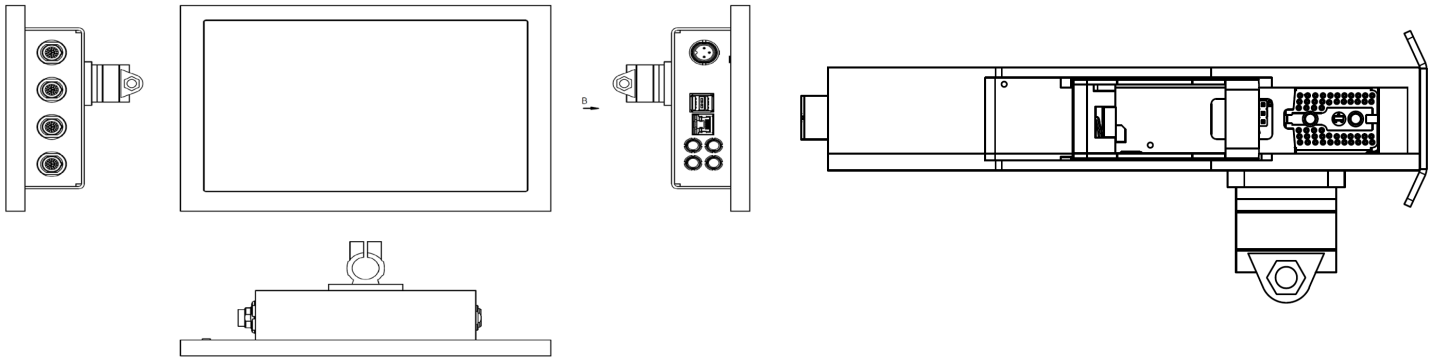
Up to 100 mm print height (depending on type and number of print heads)



High-resolution 600 dpi print for sharp and accurate print results



Made in Germany & 24 month guarantee (excluding consumables)



in-line PRO

Technical specifications

<p>Printing process</p> <p>Print height</p> <p>Print speed</p> <p>Print surfaces</p> <p>Print options</p> <p>Memory capacity</p> <p>Connectivity</p>	<p>Print system</p> <p>High-Res TIJ (Thermal Inkjet) print technology with 600 dpi</p> <p>Print distance to surface of up to 8 mm (0.3"), 16 mm (0.6") with SP25 ink</p> <p>Full-surface printing with up to 100 mm print height (with full extension with 4 heads)</p> <p>120 m (393 feet) per minute with 600 x 150 dpi</p> <p>Extensive ink portfolio for almost all materials and surfaces in several colours</p> <p>Alphanumeric characters and logos, date/time, counter, batch/box number, 1D and 2D barcodes</p> <p>Internal memory for over 100,000 texts and logos</p> <p>RJ 45 Ethernet connection with DHCP</p> <p>Communication interfaces via MQTT, OPC UA, http request and TCP-Server</p> <p>Web server for access from every workstation</p> <p>Ready-made programme code for Siemens PLC contro</p> <p>App for iOS and Android Systeme (each smartphone and tablet)</p>
<p>User interface</p>	<p>Intuitive user interface with genuine WYSIWYG print preview</p> <p>Automatic wizards for printer setup</p> <p>Graphic instructions for installation and maintenance in printer display</p>
<p>Input devices</p> <p>Display</p> <p>6 LED displays</p> <p>Input / Output</p>	<p>Wireless compact keyboard (included in scope of delivery), mobile devices or PC</p> <p>Capacitive 10,2 inch colour LCD touchscreen with LED technology</p> <p>ON/OFF, print, low ink level, alarm, print direction right/left</p> <p>Specific industry connection for encoder, alarm, relay and photoelectric cells 1 & 2</p> <p>Photoelectric cell 2 input can be used as multi-IO: Reset product counter, increase product counter, change print direction, start/stop print, etc.</p> <p>2 USB high-speed 2.0 inputs</p>
<p>Language selection</p> <p>Housing / Structure</p>	<p>German, English, Spanish, Russia, Turkish, Portuguese, simplified Chinese</p> <p>Very robust and impact-resistant aluminum housing</p> <p>Stainless steel deflector on the front of the printer for food environments</p> <p>Print head and controller seperated. Up to 4 heads per controller</p> <p>Independent unit, can be used without PC</p>
<p>Power supply</p> <p>Dimensions (L/W/H)</p> <p>Weight</p> <p>Operating environment</p> <p>Quality</p>	<p>AC 100-240 V, 50/60 Hz, 1,6 A, automatic changeover</p> <p>166 x 250 x 55 mm (controller), 177 x 53 x 67 mm (print head)</p> <p>1,5 kg – without cartridge and holder</p> <p>5-40 °C (41-104 °F) at 10-90% humidity (non-condensing)</p> <p>Made in Germany</p>
	<p>Scope of delivery</p> <p>edding in-line PRO print system, wireless keyboard, edding 8850 hole marker, power supply unit 110-240 V, grounding cable, hex wrench and screws</p> <p>Attachment material: stainless steel rods in lenghts 20, 25 and 35 cm, two cross clamps and a base clamp for for mounting on the machine and attachment for the printer</p>
<p>Encoder set</p> <p>Photoelectric cell set</p> <p>Alarm set</p>	<p>Additional accessory</p> <p>High print quality at changing conveyor speed</p> <p>Reliable and precise activation at small and unusual product forms</p> <p>Optical signals of the operating status in three colours: red (error), yellow (warning) and green (pressure OK)</p>
	<p>Guarantee</p> <p>24 months (except consumable)</p>