

ATI MAG

Portable magnetic Rockwell hardness tester



ATI MAG

ATI MAG is a portable hardness tester designed for Rockwell hardness measurements, it is fully compliant with ASTM E-18 and ISO 6508 standards.



AUTOMATIC TEST CYCLE

ATI MAG operates with an electronic load cell and an intelligent control system that automatically manages the entire test cycle. This ensures a fast and reliable testing process with minimal user intervention.

MAGNETIC CLAMPING SYSTEM

Equipped with a double magnetic clamping system, ATI MAG ensures perfect stability during tests, even in challenging environments. This feature enhances performance, providing consistent and accurate results.

SINGLE INPUT AND AUTOMATIC RECOGNITION

The testing process is initiated with a single input, and the device automatically recognizes the test surface and adjusts the test cycle accordingly. This feature simplifies the testing process, making it more efficient.

AUTOMATIC COMPENSATION FOR STRUCTURAL DEFLECTION

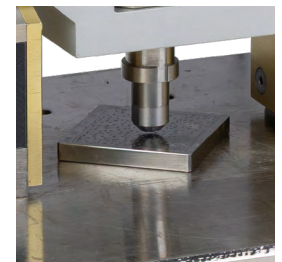
ATI MAG compensates for any structural deflection of the sample, ensuring absolute measurement accuracy in all test conditions. This guarantees that results are unaffected by external factors such as vibrations or misalignment.

HIGH-PRECISION DEPTH MEASUREMENT

The device offers highly accurate depth measurement, with an accuracy of 0.0001mm, coaxial to the indenter, ensuring precise hardness readings every time. ATI MAG ensures accurate hardness measurements, even on the first test, eliminating the need for repeated tests. This feature improves efficiency and minimizes the potential for errors.

AFFRI TESTING INSTRUMENTS LABORATORY ACCREDITED ISO/IEC 17025

AFFRI TESTING INSTRUMENTS Laboratory, accredited by ANAB ISO/IEC 17025 n. AC 3026.01, provides certified precision test blocks for calibrating hardness instruments, meeting ASTM and ISO standards. Our specimens cover all hardness scales (Rockwell, Brinell, Vickers, Knoop) with a wide range of values. With ILAC-MRA accreditation, each specimen ensures high accuracy and reliability.





COMPACT AND LIGHTWEIGHT

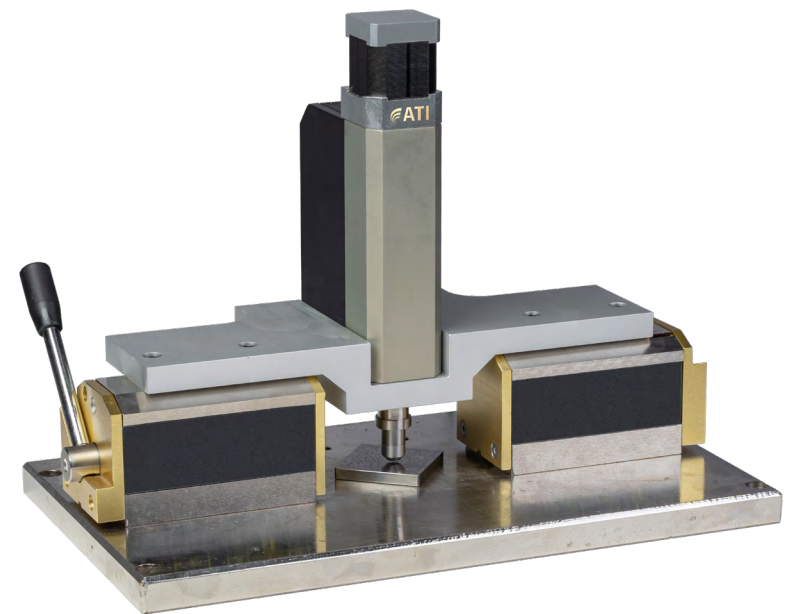
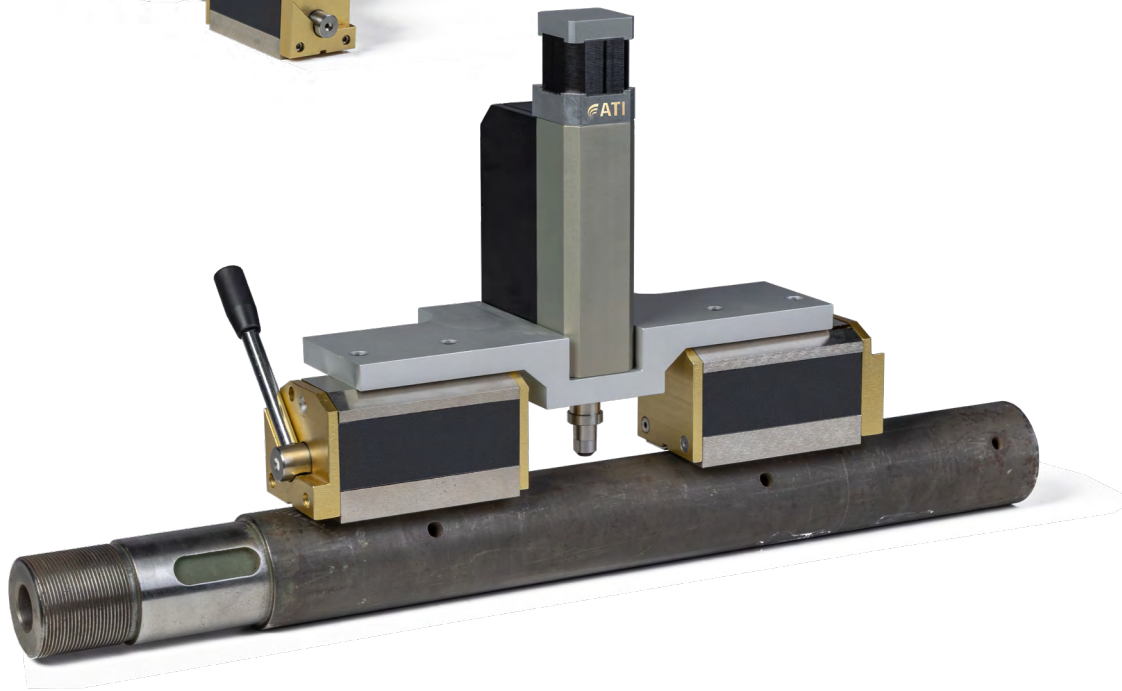
Weighing only 10 kg (including the magnet), ATI MAG is designed to be highly portable and user-friendly. Its small size and low weight make it easy to use in a wide range of test conditions, without compromising on precision.

PERFECT STABILITY ON ALL SURFACES

The device offers excellent stability on every surface, including round and long parts such as pipes, with automatic alignment capabilities. This ensures seamless testing even in non-ideal conditions, ensuring accuracy regardless of the test surface.

VERSATILE OPERATION

ATI MAG is capable of performing tests at any inclination, including inverted positions, without the need for manual adjustments. Its versatile design makes it suitable for a wide range of test scenarios. ATI MAG is a high-precision portable hardness tester that offers excellent performance, user-friendly features, and reliable results. It is an indispensable tool for any industry requiring accurate hardness testing, combining portability with the highest standards of accuracy and ease of use.



TECHNICAL DATA

Model:	ATI MAG
Compliance standards:	ASTME-18, ISO 6508
Preload:	98.1 N (10 Kgf)
Rockwell load force:	60 Kg (588.4 N), 100 Kg (980.7 N), 150 Kg (1471 N)
Feasible tests:	HRC, HRA, HRD, HRB, HRF, HRG
Accuracy:	0.0001mm
Resolution:	0.1 HR
Test cycle:	Automatic test cycle with automatic recognition of sample surface
Principle of operation:	Load-Cell System
Data memory:	100 test results
Data output:	USB to PC
Printer:	Bluetooth to printer
Power supply:	Rechargeable Li-ion battery 3000mAh, 3.6V - Work time: 6 hours - Charge time of battery: 2 hours
Dimensions:	200mm x 110mm x 46mm
Weight:	2 Kg (10 Kg including the magnet)
Magnetic clamping bases:	ATI M30 : single magnetic clamping base (300mm) for HR/HB measurements up to 15 mm sample thickness ATI M70 : double magnetic clamping base for round shape samples of large or small diameters

The manufacturer reserves the right to make changes aimed at improving the products without prior notice. Images for illustrative purposes only. Colors and product details may vary.

STANDARD ACCESSORIES

- Indenter guide
- Diamond Rockwell indeter
- Ball RockwellB indenter
- HRC test block with ILAC MRA certificate
- HRB test block with ILAC MRA certificate
- Recharble battery
- Battery charger
- Conversion table guide
- User manual
- Calibration certificate ILAC-MRA accredited ISO-17025
- Warranty certificate



ATI M70 : double magnetic clamping base



ATI M30 : single magnetic clamping base



ASSISTANCE AND CALIBRATION SERVICE

ATI AFFRI TESTING INSTRUMENTS offers real-time technical support, with remote diagnosis for technical and software issues. We provide remote software updates to ensure our products are always up to date. We are accredited for calibration and certification service with ANAB ILAC-MRA / ISO 17025 certifications, equivalent to A2LA accreditation. Our scope of accreditation includes calibration of ATI and many other brands, for instruments such as Rockwell, Brinell, Vickers, Knoop, Shore hardness, tensile testing machines, compression testing machines, and much more. Contact us for a quote, regardless of the brand of equipment.

ATI is a ® trademark of
AFFRI TESTING INSTRUMENTS S.r.l.

Europe/Asia:
ATI_{s.r.l.}
AFFRI TESTING INSTRUMENTS S.r.l.
Via M. Tagliaferro, 8, I-21056 INDUNO OLONA (VA) - ITALY
Phone: +39 0332 201533
info@affri.com - www.affri.com

America:
AFFRI_{inc.}
850 Dillon Dr. Wood Dale, IL 60191
Phone: +1 224 374 0931 / +1 630 303 1588
sales@affriusa.com - www.affri.com