



ATI UCI-918

Portable ultrasonic hardness tester



ATI UCI-918

Portable ultrasonic hardness tester



The ATI UCI-918 is a portable ultrasonic hardness tester that is fully compliant with industry standards, including ASTM-A1038, JB/T9377, JJG-654 and GB/T34205, DIN 50159-1. It features a certifiable 136° Vickers indenter, ensuring accuracy and reliability. The device features adjustable load forces of 1, 2, 5 and 10 kg, allowing versatility in testing various material thicknesses. The ATI UCI-918 offers an intuitive and easy-to-use interface. It supports calibration for various elastic modulus materials, requiring only a single-point calibration to accommodate new materials. It allows calibration to any hardness standard, even when no conversion table is available. Test results are available in as little as 2 seconds, improving efficiency in industrial settings. The device offers 50 data storage options and 360° positioning, including inverted measurements, ensuring flexibility and accuracy in various testing environments. This makes it an ideal solution for fast and accurate hardness testing on a wide range of materials.

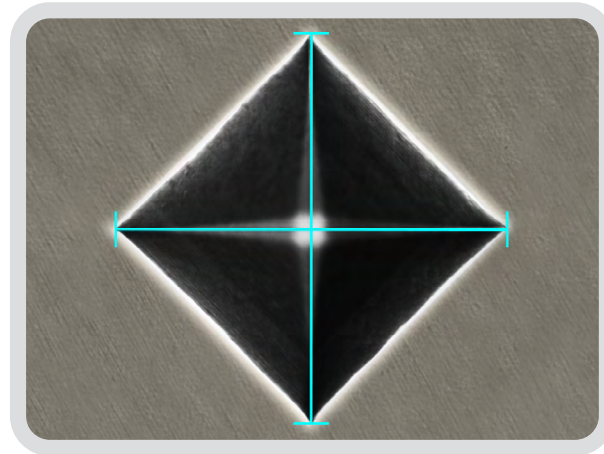
APPLICATIONS

The ATI UCI-918 is designed to evaluate a wide range of materials, including ferrous and non-ferrous metals and their alloys. This versatility makes it particularly effective for hardness testing complex components such as flange edges, gear root stampings, dies, thin plates, surface hardened gear teeth, gear splines and taper sections, providing comprehensive coverage for various industrial applications. One of the distinguishing features of the ATI UCI-918 is its ability to provide accurate and reliable measurements on various shapes and thicknesses, with no positioning limitations, and is 360° operable. materials and complex components, positions it as an industry leader.



ILAC-MRA CERTIFIED MEASURES ISO-IEC 17025

The ATI UCI-918 also features a certifiable 136° Vickers indenter, which not only increases its versatility but also provides further evidence of its performance and reliability in a variety of applications. The ATI UCI-918 is also capable of performing accurate and ILAC-MRA ISO-IEC17025 certified Vickers hardness tests, making it an indispensable tool for industries that require stringent quality control. The ATI UCI-918 combines cutting-edge technology with certified testing capabilities, ensuring hardness testing that meets the required standards.



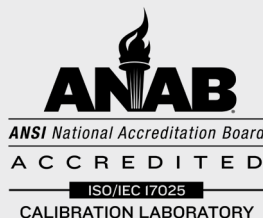
OPTIONAL PROBES AVAILBLE

Probes:	0.5 kg	1 kg	2 kg	5 kg	10 kg
Test Force:	5 N	10 N	20 N	50 N	98 N
Probe Diameter:	22 mm	22 mm	22 mm	22 mm	22 mm
Length:	150 mm	150 mm	150 mm	150 mm	150 mm
Sensor Diameter:	2.4 mm	2.4 mm	2.4 mm	2.4 mm	2.4 mm
Maximum Roughness:	Ra < 3.2 um	Ra < 3.2 um	Ra < 5 um	Ra < 10 um	Ra < 15 um
Minimum Weight:	0.3 kg	0.3 kg	0.3 kg	0.3 kg	0.3 kg
Minimum Thickness:	2 mm	2 mm	2 mm	2 mm	2 mm

TECHNICAL DATA

Model		ATI UCI-918						
Measuring range:		HV50-1599, HRC20-76, HB76-618, HRB41-100, HRA61-85.6, Mpa255-2180						
Hardness parameter:		HRC, HRB HRA HB HV						
Accuracy:		HRC: ±1.5% HRC - HB: ±3% HB - HV: ±3% HV						
Allowable Max error in % :	TEST BLOCKS	HV10	HV5	HV2	HV1	HV0.8	HV0.3	HV0.1
	< 250 HV	4	4	4	4	4	5	5
	250- 500 HV	4	4	4	4	4	6	6
	500 - 800 HV	4	4	5	5	5	7	7
	> 800 HV	4	4	6	6	6	8	8
Impact energy:		2 Kgf (Optional: 0.5 Kg, 1 Kg, 5 Kg, 10 Kg)						
Display:		3.5-inch LCD color display						
Memory:		50 groups of data & 10 calibration files						
PC connection:		Available						
Printer:		Available (Bluetooth)						
Power supply:		Rechargeable Li-ion battery 3000mAh, 3.6V						
Temperature:		Tests can be performed in an environment with a temperature between 10°C and 35°C						
Dimensions:		155 x 80 x 30 mm						
Impact device type:		D, DC, DL, D + 15, G, C, E						
Standard configuration:		Main unit, Probe (2kgf), Probe cable, 5V power adapter, Carrying case, Standard test block, Manual, Warranty card.						
Accessories:		The following probes are available on request: 0.5kgf, 1kgf, 5kgf, 10kgf]						

The manufacturer reserves the right to make changes aimed at improving the products without prior notice.
Images for illustrative purposes only. Colors and product details may vary.



ASSISTANCE AND CALIBRATION SERVICE

ATI AFFRI TESTING INSTRUMENTS offers real-time technical support, with remote diagnosis for technical and software issues. We provide remote software updates to ensure our products are always up to date. We are accredited for calibration and certification service with ANAB ILAC-MRA / ISO 17025 certifications, equivalent to A2LA accreditation. Our scope of accreditation includes calibration of ATI and many other brands, for instruments such as Rockwell, Brinell, Vickers, Knoop, Shore hardness, tensile testing machines, compression testing machines, and much more. Contact us for a quote, regardless of the brand of equipment.

ATI is a ® trademark of
AFFRI TESTING INSTRUMENTS S.r.l.

Europe/Asia:



AFFRI TESTING INSTRUMENTS S.r.l.
Via M. Tagliaferro, 8, I-21056 INDUNO OLONA (VA) - ITALY
Phone: +39 0332 201533
info@affri.com - www.affri.com

America:



850 Dillon Dr. Wood Dale, IL 60191
Phone: +1 224 374 0931 / +1 630 303 1588
sales@affriusa.com - www.affri.com