

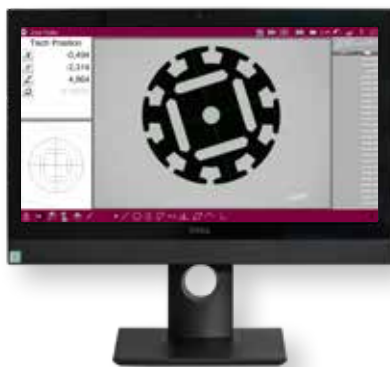


Schneider

Measurement software



M³



Measurement software for tactile and optical measurements

Precise, manual measurement of geometric elements with intuitive multi-touch application

- Clearly structured user interface
- No hidden sub-menus
- Innovative edge algorithm

SIMPLY PRECISE





M3 measurement software with image processing

Intuitive multi-touch measurement software for camera-aided measurement devices in the entry-level class

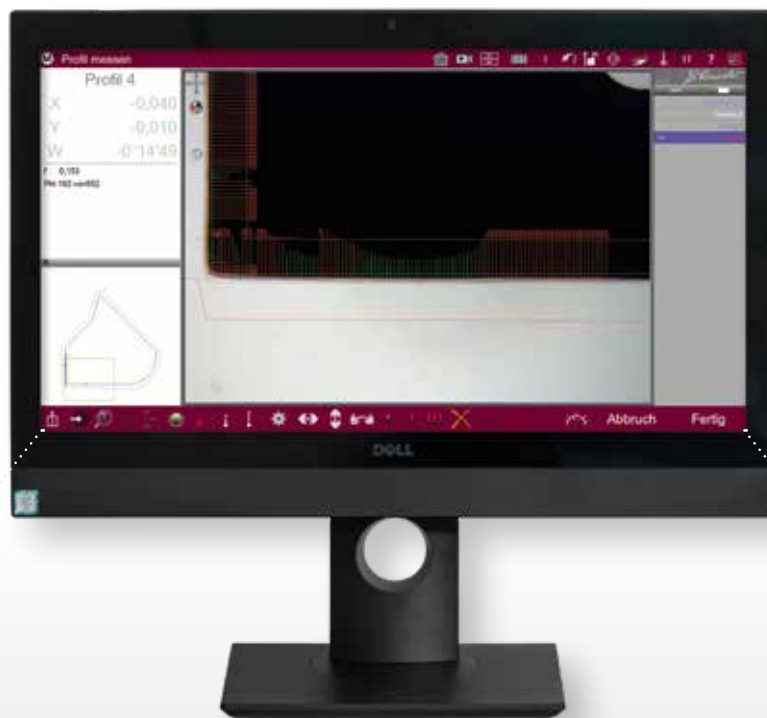
Simply touch and measure

With the M3 measurement software, Dr. Heinrich Schneider Messtechnik is setting new standards in handling and precision for the precise measurement of geometric elements using camera-based measurement devices in the entry-level class.

Inspired by smartphone and tablet applications, an intuitive multi-touch application has been developed that is easy and quick to learn how to use. The software impresses with a clear user interface – without hidden sub-menus – and an

innovative edge algorithm for quick and reproducible measurement point identification.

Very simple dimensioning of the measured features and their recording – in graphic and tabular form – are standard functions. Comprehensive tolerance checks of the measured elements to DIN/ISO are naturally also integrated.



Your measurement data is always accessible on the bright, high resolution multitouch screen in 16:9 format.



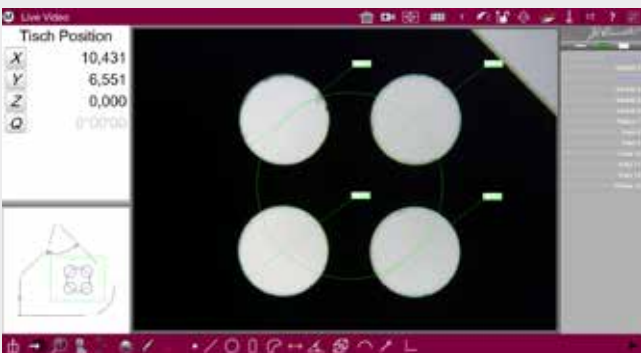
The toolbar includes a variety of options. In addition to selecting a suitable measurement tool to identify the measurement point, the element to be measured can also be selected.



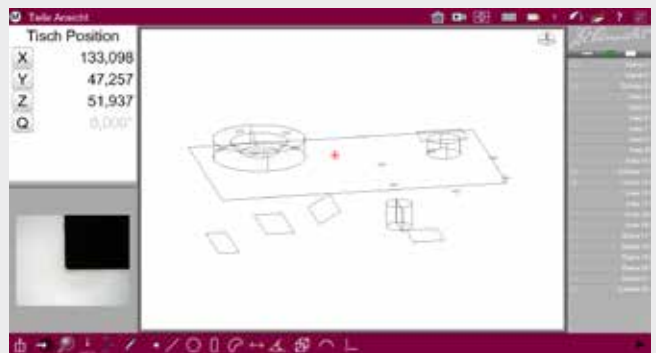
Optical comparison of "good/poor" including tolerance range that can be generated freely to actively support operation.



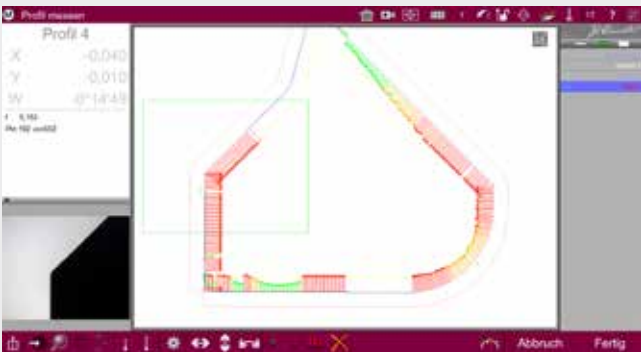
The sector incident light can also be used to accurately record and measure elements on the surface of the workpiece.



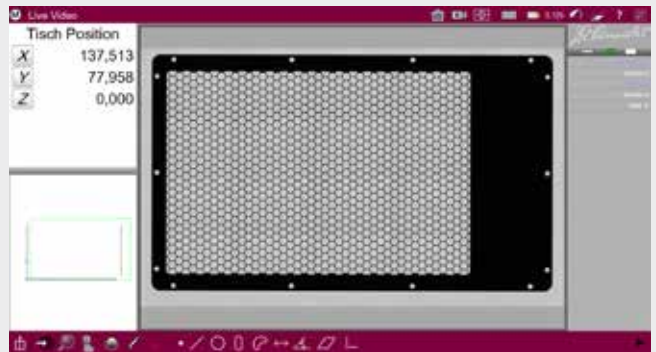
Simple measurement and dimensioning of the element on the screen using your finger tip.



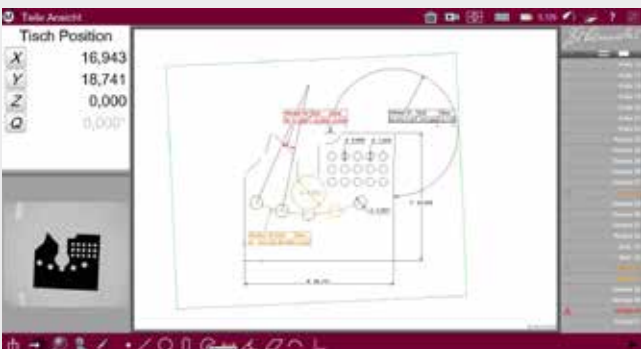
Tactile probe for details which cannot be measured optically.



Profiling: automatic adjustment of the entire workpiece contour in the specified tolerance range as well as the evaluation and display of the measurement points including a filter function.



Stitching: Combination of individual images to provide a complete display of the workpiece. Ensuring that measurement tasks can be resolved and documented clearly.



Graphic report: A clear overview of all measured and constructed elements including dimensioning and calculation functions.



Tabular report: Display including filter functions, tolerance specification, geometrical and positional tolerances, export and print function.

The measurement log

Nr.	Element	Koef.	Sollwert	Istwert	Tol-	Tol+	Abw.	Toleranz
0	Kreis 7	d	3,000	3,003	0,000	0,000	0,003	→← ● ←→
0	Kreis 19	d	1,900	1,908	0,000	0,000	0,008	→← ● ←→
0	Kreis 28	d	8,800	8,818	0,000	0,000	0,018	→← ● ←→
0	Abst. 34	L	35,100	35,101	0,010	0,010	0,001	→← ● ←→
0	Abst. 35	L	30,550	30,569	0,100	0,100	0,049	→← ● ←→
0	Radius 36	R	90,280	90,222	0,090	0,090	0,033	→← ● ←→
0	Winkel 40	W	12,000°	11,966°	0,000°	0,000°	0,034°	→← ● ←→
0	Winkel 41	W	270,000°	270,116°	1,000°	1,000°	0,116°	→← ● ←→

In addition to the tabular display of the results, the measurement log also includes a graphic representation with a dimensioned overview of the workpiece. The header of the log can be adjusted on a customer-specific basis. The measurement log can either be printed or made available as a data export. Data is exported in CSV, TSV, TXT, DXF, CLOUD.CSV or CLOUD.DXF format. The target value can be imported from a DXF file. A warning and intervention threshold can also be set.

Measurement program for manual measurement

The measurement program is created automatically during the first measurement. The sequence of the measurement program is supported graphically so that measurement points are recorded at the same point if measurements are repeated. This guarantees stable measurement results and the same high level of precision of the measurement device. Data can be issued automatically following the measurement.

M3 measurement software – the intuitive multi-touch application

Just touch and the measurement is finished: The easily learned and clear user interface impresses with its simplicity. No nested menus, no tedious mouse selection – **measurements made easy!**

Features and functions of the M3

Basic equipment

- Integrated image processing features to measure 2D control geometries
- Designs and relations from measured elements
- Levelling and alignment function
- Store parts programs so that they can be reused
- Tolerance test as per DIN/ISO
- Multi-lingual
- Data export in TXT, TSV, CSV, DXF, XLSX, CLOUD.DXF or CLOUD.CSV format
- Measurement log can be printed, incl. graphics
- Dimensioning of partial view
- Light control for incident and transmitted light using position laser
- Stitching: Assembly of several images
- Measurement of several parts in the field of view
- Pallet measurement and loop programming

Options

- DXF module to compare the measurement to the drawing using the tolerance range
- Tactile probe module for CNC operation
- Thread measurement module
- Cable insulation module
- Profiling module for contour comparison (DXF required)

These device series support M3 ▶



Projector



2D Multisensor



2D Optical