

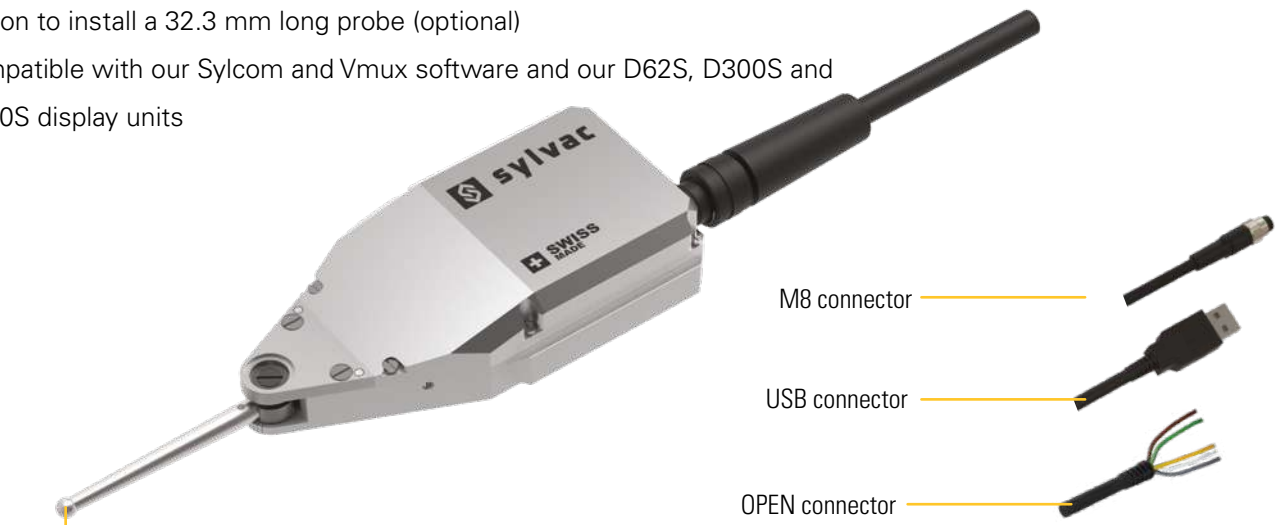


Lever probe

S_Probe LPD

DESCRIPTION

- Lever probe with direct digital output
- Instrument for checking linear and circular geometry
- M2 stylus with Ø 3 mm tungsten carbide ball, swivelling and interchangeable
- Available in 3 versions :
 - Model with direct output USB
 - Model with direct output M8
 - Model with direct output OPEN
- Option to install a 32.3 mm long probe (optional)
- Compatible with our Sylcom and Vmux software and our D62S, D300S and D400S display units



Stylus length 32.3mm (accessory)

Measuring stylus with tungsten carbide ball Ø 3 mm, movable over ±90°, interchangeable, M 2

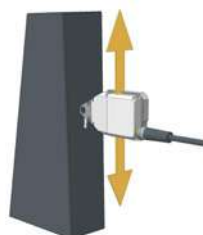
Bent cable (accessory)



IP40



Circular geometry measurement on rotary table



Measuring linear geometry and perpendicularity

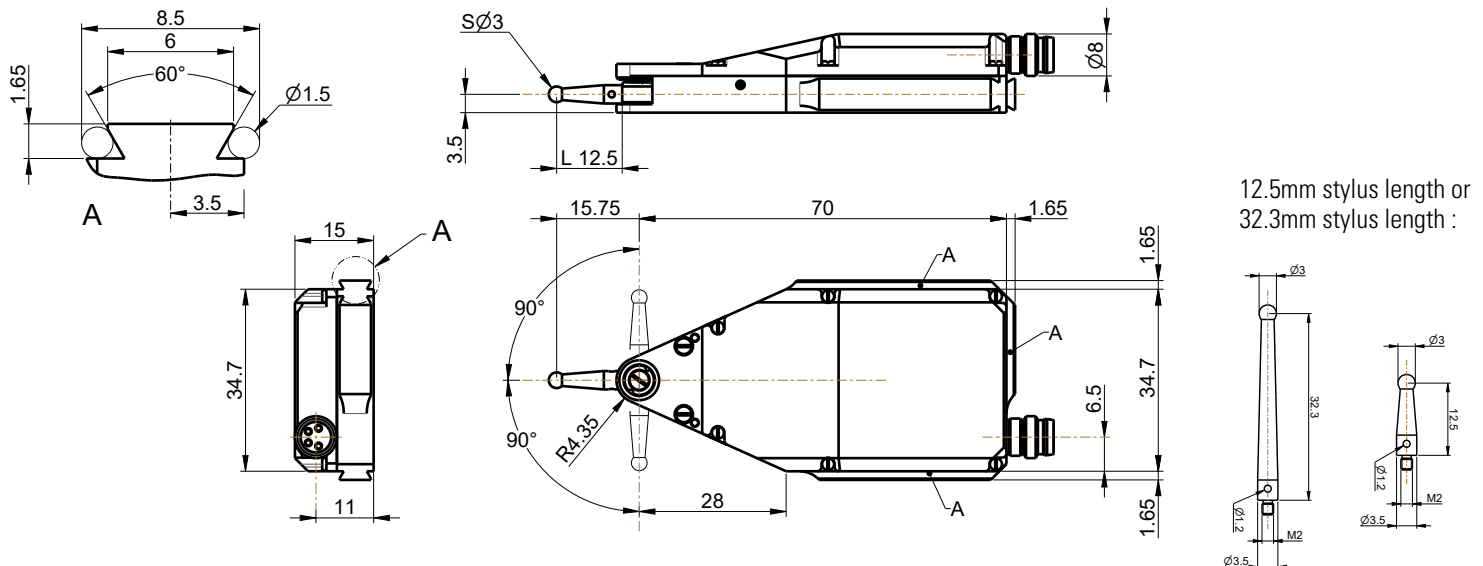


Linear geometry and parallelism measurement

Lever probe

S_Probe LPD

DIMENSIONAL DRAWINGS



TECHNICAL SPECIFICATIONS

	801-3012	801-3212	801-3412
Type	LPD USB	LPD M8	LPD OPEN
Force	cN	4 - 19 cN ±20% / 2 - 9 cN ±20% ¹⁾	
Measuring range	mm	± 0.6 / ±1.3 ¹⁾	
Resolution	µm	0.01	
Stylus length	mm	12.5 / 32.3 ¹⁾	
Max. Error	µm	0.8 / 2 ¹⁾	
Local max. Error	µm	0.3 / 0.7 ¹⁾²⁾	
Repeatability	µm	0.07 / 0.15 ¹⁾	
Max. hysteresis (Fu)	µm	0.5 / 1 ¹⁾	
Weight	g	92 ³⁾	
Protection		IP40	
Output data	USB	M8	OPEN

¹⁾ with stylus 32.3mm, reference 801-8004, option

²⁾ max. local error over 50 µm, unidirectional

³⁾ cable-free instrument

STANDARD DELIVERY

- Instrument according to technical specifications
- Straight cable, length 2m, output type according to model
- Quickstart
- Clamping stem Ø 8 mm (801-8002)
- 1 contact point M2, with MD ball Ø3, length 12.5mm
- Calibration certificate